



# MicroLogPRO environmental monitoring

The MicroLogPRO solution offers two low-cost portable data logging systems to meet a broad spectrum of data monitoring needs.

- Accurate, portable MicroLogPRO data loggers
- Feature-rich software for data monitoring, analysis and logger calibration
- Measuring up to 4 parameters: Temp, RH and Dew Point plus external sensors
- External temperature sensors available
- Unique weboomerang™ feature that automatically creates and emails PDF data report when logger is connected to PC
- Low consumption, 2-year battery life, ideal for long-haul monitoring
- Multi-function keypad supporting manual time stamp and Push to Run modes
- View up to 30 days Min/Max data history on LCD screen
- Water and dust proof (IP65/NEMA 4)
- Records months of data - up to 52,000 samples
- Built-in LED for logging and alarm indication



## Solutions



COLD CHAIN



HOSPITAL ENVIRONMENTS



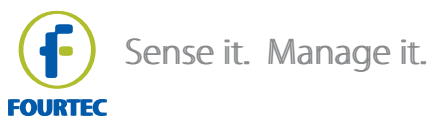
PHARMA INDUSTRY



WAREHOUSE STORAGE



TRANSPORTATION



**www.esis.com.au**  
 Ph 02 9481 7420  
 Fax 02 9481 7267  
 esis.enq@esis.com.au

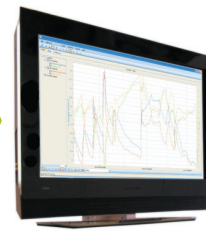
# MicroLogPRO Typical Operating Method



**1** Record data using internal or external sensors



**2** USB data download to PDF report with automatic email delivery



**3** Data analysis using integrated DataSuite software

## DataSuite Software for MicroLog

The DataSuite software provides security for your products with online monitoring and control of the entire application environment.

### Supported Operating Systems:

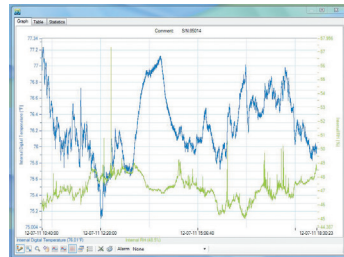
Supported Operating Systems: Windows® XP SP3 / Vista / 7 / 8.1 (32 and 64 Bit)

### Minimum Hardware Requirements:

Pentium 4.2 GHz Processor or better, 512 MB RAM, 250 MB available disk space

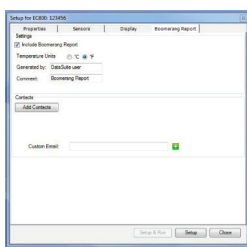
### Data View Features

Real-time data in multiple displays (Graph, Table, Statistics)



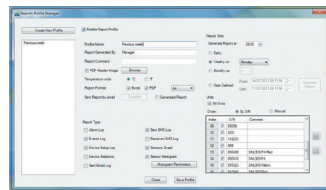
### weboomerang™ Feature

Configure logger setup to automatically create and email PDF data report when connected to computer via USB



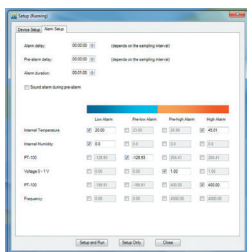
### Report Module

The Report module provides the PicoLite user with an intuitive interface for creating and generating reports which have many parameters garnered from the PicoLite units and software. Each report can be emailed to a selected distribution list, at pre-defined time intervals, in PDF and Excel format.



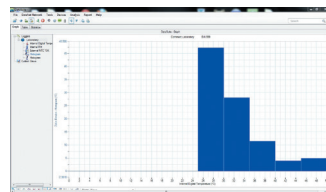
### Alarm Features

Alarm setup supporting two levels – Low and High – plus email & SMS notifications in the event of an alarm



### Analysis Features

Dew point analysis, FO Pasteurization, histogram, MKT, statistics with export to Excel and CSV formats



## Specifications

	EC800	EC850
Measurement Inputs	Two (one internal, one external)	Three (two internal, one external)
Internal Sensor Range	-40 to 80 °C	Temp: -40 to 80 °C RH: 5 to 95%
Internal Temperature Accuracy	0 to 60 °C: ±0.3 °C After calibration: -40 to 0 °C: ±0.3 °C 60 to 80 °C: ±0.3 °C	± 0.3 °C
Internal Temperature Resolution	0.02 °C or better	0.015 °C
Internal Humidity Accuracy	N/A	± 2 %
Internal Humidity Resolution	N/A	0.05 %
External Input Support	NTC Temperature -50 to 110 °C	
Sampling Memory	52,000 samples (over 3 channels)	
Sampling Rate	Minimum: Once every second Maximum: Once every 18 hours	
Auto PDF & Email Delivery (Boomerang Feature)	√	
LCD	Four-digit, 7-segment LCD with decimal point	
Dew Point	LCD and software indication	
LED	LCD and software indication	
PC Interface	Mini USB	
Infrared Printout	None	
Power Supply	2/3 AA 3.6V lithium battery	
Battery Life	~ 2 years depending on sampling rate and operating conditions	
Dimensions	Diameter: 72 mm , Thickness: 22.9 mm	
Weight	55 g	
Wall Mount	Cradle accessory	
Standards Compliance	CE, IP65, EN12830	CE, IP54, EN12830



www.fourtec.com | info@fourtec.com

© 2020 Fourtec - Fourier Technologies Ltd. All rights reserved. Fourtec - Fourier Technologies Ltd. logos and all other Fourtec product or service names are registered trademark or trademarks of Fourtec - Fourier Technologies Ltd. All other registered trademarks or trademarks belong to their respective companies. P/N BK180, Rev 5.15



www.esis.com.au  
Ph 02 9481 7420  
Fax 02 9481 7267  
esis.enq@esis.com.au