

MicroLite Specifications

	LITE5008L LITE5032L Internal Temp	LITE5032L-RH Internal Temp/RH	LITE5032L-4/20 4 to 20 mA	LITE5032L-V 0 to 10 V	LITE5032L-EXT External NTC
Range	-40 to 80 °C	Temp: -40 to 80 °C RH: 5 to 95 %	4 to 20 mA	0 to 10 V	-50 to 150 °C
Accuracy	0 to 60 °C: ±0.3 °C After calibration: -40 to 0 °C: ±0.3 °C 60 to 80 °C: ±0.3 °C	Temp: ±0.3 °C RH: ± 2%	±20 µA	±5 mV	± 0.3 °C (after calibration with Fourtec NTC sensor)
Resolution	0.03 °C or better	Temp: 0.01 °C RH: 0.05 %	1 µA (display) 5 µA (software)	1 mV (display) 4 mV (software)	0.02 °C or better
Maximum Load	N/A	N/A	25 mA, 3 V	12 V	N/A
Dew Point	X	✓	N/A	N/A	N/A
LCD	✓	✓	✓	✓	✓
LED Alarm Indicator	✓	✓	✓	✓	✓
Sampling Memory	8,000 and 32,000	32,000 (16K per channel)	32,000		
Sampling Rate	Once per second / once every 18 hours				
Battery Type / Battery Life	CR2032 3V 2 years, depending on sampling rate and operating conditions				
Operating Environment					
Dimensions (With Cap)	11 x 3.9 x 2.6 cm	11 x 3.9 x 3 cm	14 x 3.9 x 2.6 cm		
Weight	45.5 g				
Standards Compliance	CE, EN12830, IP67	CE, EN12830, IP54			
Wall Mount	Logger cradle accessory provided				

About Fourtec

Fourtec – Fourier Technologies is a recognized leader in data-logging and monitoring solutions for controlled industrial environments, such as food, pharmaceutical, medical, storage and transportation industries.

Our solutions enable our customers to deliver higher quality products, ensure consumer safety, comply with regulatory requirements and increase profitability. Innovation, expertise and a commitment to quality are the values that drive the development and production of our products.

Fourtec – Fourier Technologies is a proven specialist in cold chain management systems, we deliver end-to-end

solutions that accompany products from the processing floor to the end user.

Fourtec – Fourier Technologies operates in over 50 countries, through local distributors / partners. Fourtec’s trusted data acquisition solutions have been implemented globally by many leading organisations such as: Mylan, Pfizer, Teva, Schneider Electric, Vishay, airline catering companies and many others.

Fourtec – Fourier Technologies is a spinoff company based on the industrial division of Fourier Systems, a world leader with more than 30 years of experience in serving this market in the field of science education.



www.fourtec.com | info@fourtec.com

© 2020 Fourtec - Fourier Technologies Ltd. All rights reserved. Fourtec - Fourier Technologies Ltd. Logos and all other Fourtec product or service names are registered trademark or trademarks of Fourtec - Fourier Technologies Ltd. All other registered trademarks or trademarks belong to their respective companies. P/N BK180, Rev 5.15



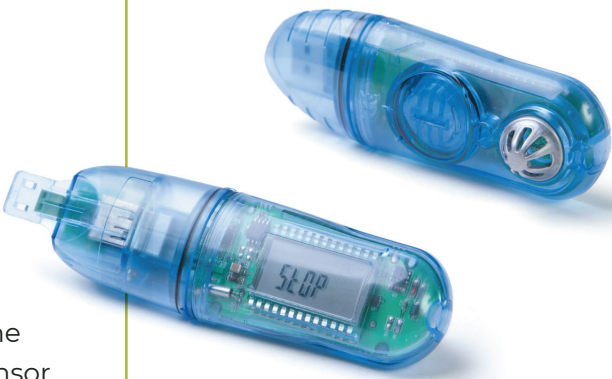
www.esis.com.au
Ph 02 9481 7420
Fax 02 9481 7267
esis.enq@esis.com.au



MicroLite
Portable cable free USB loggers

Combining innovation with simplicity, the high accuracy MicroLite USB data logger is a vital tool for monitoring and recording a variety of data. The MicroLite is available in 6 models, offering a unique plug and record data logger for every application and helping organizations maintain the highest standards throughout the cold chain. Real-time sensor readings with corresponding time stamp are clearly displayed on the logger's LCD screen, incorporating alarm thresholds. The logger is designed for low power consumption to extend battery life and reduce the time between battery replacements.

- High accuracy, high functionality, low cost data logger
- Direct USB interface for setup, data download and firmware updates
- Unique Boomerang™ feature that automatically creates and emails PDF data report when logger is connected to PC
- Complimentary DataSuite Software for comprehensive data analysis and logger calibration
- Rapid data download to Graph, Table view and Excel spreadsheet
- LCD featuring up to 3 decimal point readings, min/max data history and battery level
- LED alarm indicator
- Up to 2-year battery life in normal conditions
- 32,000 sample memory accommodating long-haul transports
- Magnet key to mark time stamps, activate and stop logging
- Built-in real-time clock and calendar
- Dust and water resistant, depending on logger model
- Cradle wall mounting for fixed monitoring



Solutions



AGRICULTURE & AQUACULTURE



COLD CHAIN



FOOD & FOOD PROCESSING



HOSPITAL ENVIRONMENTS



MUSEUMS



PHARMA INDUSTRY



WAREHOUSE STORAGE



TRANSPORTATION



Sense it. Manage it.



www.esis.com.au
Ph 02 9481 7420
Fax 02 9481 7267
esis.enq@esis.com.au



MicroLite - compact, cost-effective data logging

The MicroLite product line measures temperature, humidity, voltage and current via internal + external inputs. Delivering ultimate application accessibility, the MicroLite is an ideal solution for a variety of industrial cold chain logistics, requiring a small form factor USB data logger.

The comprehensive MicroLite range allows organizations to select the unit most appropriate for their mission-critical environment:

Internal Temperature
LITE5008L /
LITE5032L



Internal Temperature & Humidity
LITE5032L-RH



External 4 to 20 mA input
LITE5032L-4/20



External 0 to 10 V input
LITE5032L-V



External NTC 10kΩ input (with NTC probe)
LITE5032L-EXT



Industrial screw-to-wire interface located inside logger cap allows direct data transfer from external sensors to the logger's memory



1
Record data using internal or external sensors



2
USB data download to PDF report with automatic email delivery



3
Data analysis using integrated DataSuite software

DataSuite Software for MicroLite

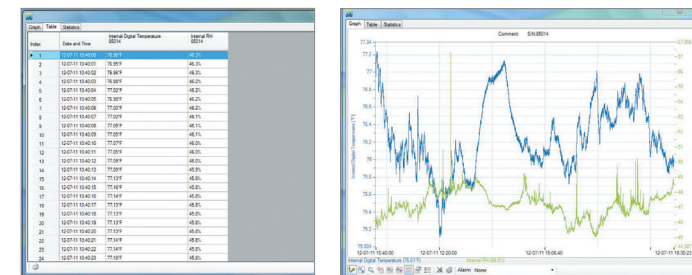
Supported Operating Systems:
Windows® XP SP3/ Vista/
7/8.1/10 (32 and 64 Bit)

Minimum Hardware Requirements:
Pentium 4, 2 GHz Processor or better, 512 MB RAM, 250 MB available disk space

The license-free DataSuite software provides security for your products with online monitoring and control of the entire application environment.

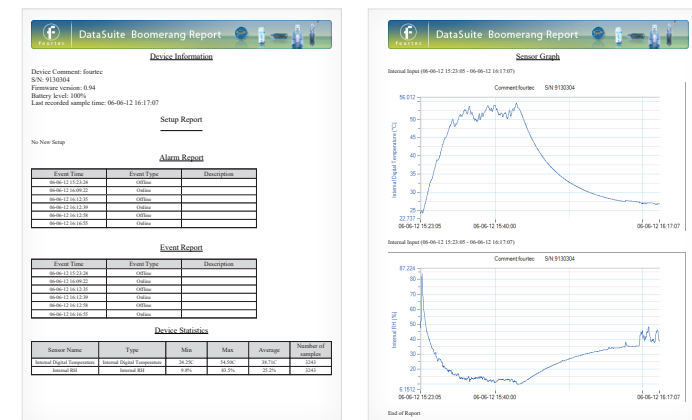
Data View Features

Real-time data in multiple displays (Graph, Table, Statistics)



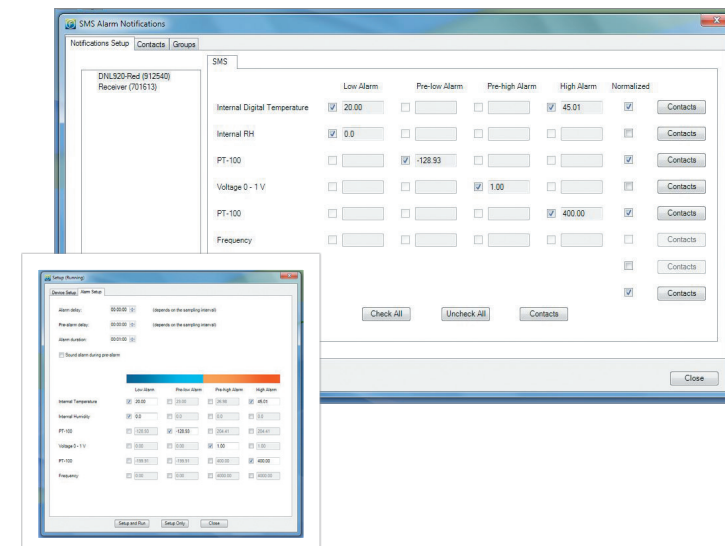
weboomerang™ Feature

Configure logger setup to automatically create and email a PDF data report when connected to a computer via USB



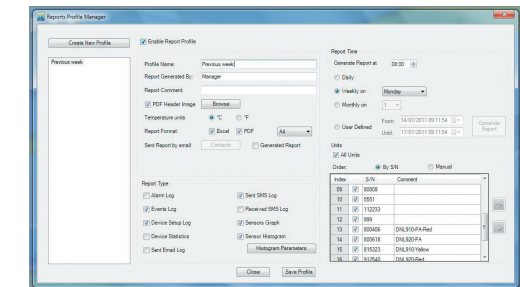
Alarm Features

Alarm level setup with email & SMS notifications. Two alarm levels, allowing for programming of separate parameters, including alarm delay and duration



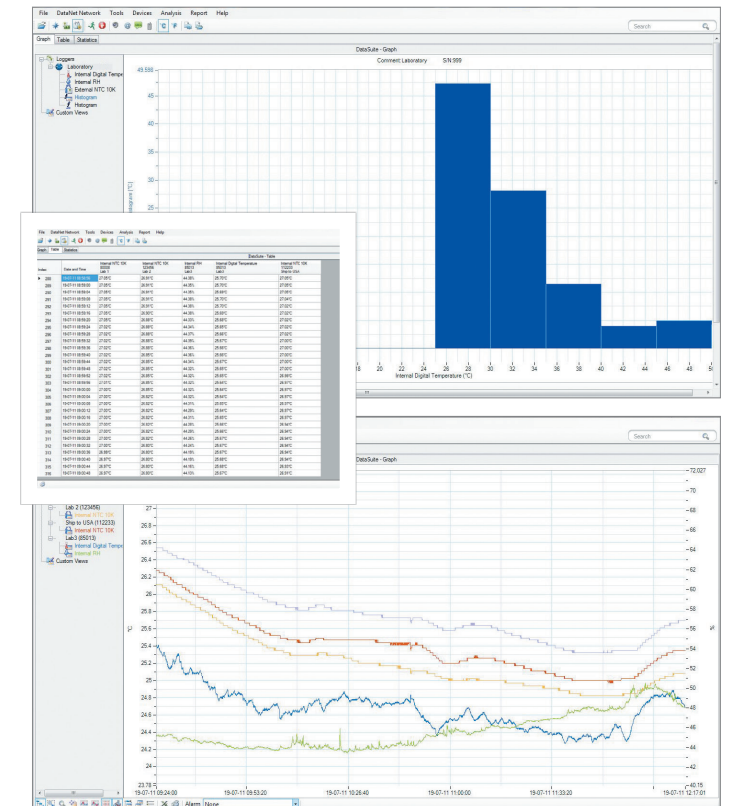
Report Module

The Report module provides the MicroLite user with an intuitive interface for creating and generating reports which have many parameters garnered from the MicroLite units and software. Each report can be emailed to a selected distribution list, at pre-defined time intervals, in PDF and Excel format



Analysis Features

Dew point analysis, FO Pasteurization, histogram, MKT, statistics with export to Excel and CSV formats



FDA Title 21 CFR Part 11 Compliant

DatPass: DatPass is a user administration software which supports the assignment of passwords and operating privileges for all Fourtec industry application software ensuring CFR compliancy. CFR is a Food and Drug Administration (FDA) issued regulation (Title 21 Code of Federal Regulations, Part 11).

DatPass Audit Trail								
Date: 11/10/2016 Time: 10:00 AM								
ID	Username	Session	Activity	Timestamp	IP Address	Page	URL	Comment
100	Admin	2016-11-10 10:00	Logon successful	2016-11-10 10:00:00	192.168.1.1	1	/	
101	Admin	2016-11-10 10:05	Logon successful	2016-11-10 10:05:00	192.168.1.1	1	/	
102	Admin	2016-11-10 10:10	Logon successful	2016-11-10 10:10:00	192.168.1.1	1	/	
103	Admin	2016-11-10 10:15	Logon successful	2016-11-10 10:15:00	192.168.1.1	1	/	
104	Admin	2016-11-10 10:20	Logon successful	2016-11-10 10:20:00	192.168.1.1	1	/	
105	Admin	2016-11-10 10:25	Logon successful	2016-11-10 10:25:00	192.168.1.1	1	/	
106	Admin	2016-11-10 10:30	Logon successful	2016-11-10 10:30:00	192.168.1.1	1	/	
107	Admin	2016-11-10 10:35	Logon successful	2016-11-10 10:35:00	192.168.1.1	1	/	
108	Admin	2016-11-10 10:40	Logon successful	2016-11-10 10:40:00	192.168.1.1	1	/	
109	Admin	2016-11-10 10:45	Logon successful	2016-11-10 10:45:00	192.168.1.1	1	/	
110	Admin	2016-11-10 10:50	Logon successful	2016-11-10 10:50:00	192.168.1.1	1	/	
111	Admin	2016-11-10 10:55	Logon successful	2016-11-10 10:55:00	192.168.1.1	1	/	
112	Admin	2016-11-10 11:00	Logon successful	2016-11-10 11:00:00	192.168.1.1	1	/	
113	Admin	2016-11-10 11:05	Logon successful	2016-11-10 11:05:00	192.168.1.1	1	/	
114	Admin	2016-11-10 11:10	Logon successful	2016-11-10 11:10:00	192.168.1.1	1	/	
115	Admin	2016-11-10 11:15	Logon successful	2016-11-10 11:15:00	192.168.1.1	1	/	
116	Admin	2016-11-10 11:20	Logon successful	2016-11-10 11:20:00	192.168.1.1	1	/	
117	Admin	2016-11-10 11:25	Logon successful	2016-11-10 11:25:00	192.168.1.1	1	/	
118	Admin	2016-11-10 11:30	Logon successful	2016-11-10 11:30:00	192.168.1.1	1	/	
119	Admin	2016-11-10 11:35	Logon successful	2016-11-10 11:35:00	192.168.1.1	1	/	
120	Admin	2016-11-10 11:40	Logon successful	2016-11-10 11:40:00	192.168.1.1	1	/	
121	Admin	2016-11-10 11:45	Logon successful	2016-11-10 11:45:00	192.168.1.1	1	/	
122	Admin	2016-11-10 11:50	Logon successful	2016-11-10 11:50:00	192.168.1.1	1	/	
123	Admin	2016-11-10 11:55	Logon successful	2016-11-10 11:55:00	192.168.1.1	1	/	
124	Admin	2016-11-10 12:00	Logon successful	2016-11-10 12:00:00	192.168.1.1	1	/	
125	Admin	2016-11-10 12:05	Logon successful	2016-11-10 12:05:00	192.168.1.1	1	/	
126	Admin	2016-11-10 12:10	Logon successful	2016-11-10 12:10:00	192.168.1.1	1	/	
127	Admin	2016-11-10 12:15	Logon successful	2016-11-10 12:15:00	192.168.1.1	1	/	
128	Admin	2016-11-10 12:20	Logon successful	2016-11-10 12:20:00	192.168.1.1	1	/	
129	Admin	2016-11-10 12:25	Logon successful	2016-11-10 12:25:00	192.168.1.1	1	/	
130	Admin	2016-11-10 12:30	Logon successful	2016-11-10 12:30:00	192.168.1.1	1	/	
131	Admin	2016-11-10 12:35	Logon successful	2016-11-10 12:35:00	192.168.1.1	1	/	
132	Admin	2016-11-10 12:40	Logon successful	2016-11-10 12:40:00	192.168.1.1	1	/	
133	Admin	2016-11-10 12:45	Logon successful	2016-11-10 12:45:00	192.168.1.1	1	/	
134	Admin	2016-11-10 12:50	Logon successful	2016-11-10 12:50:00	192.168.1.1	1	/	
135	Admin	2016-11-10 12:55	Logon successful	2016-11-10 12:55:00	192.168.1.1	1	/	
136	Admin	2016-11-10 13:00	Logon successful	2016-11-10 13:00:00	192.168.1.1	1	/	
137	Admin	2016-11-10 13:05	Logon successful	2016-11-10 13:05:00	192.168.1.1	1	/	
138	Admin	2016-11-10 13:10	Logon successful	2016-11-10 13:10:00	192.168.1.1	1	/	
139	Admin	2016-11-10 13:15	Logon successful	2016-11-10 13:15:00	192.168.1.1	1	/	
140	Admin	2016-11-10 13:20	Logon successful	2016-11-10 13:20:00	192.168.1.1	1	/	
141	Admin	2016-11-10 13:25	Logon successful	2016-11-10 13:25:00	192.168.1.1	1	/	
142	Admin	2016-11-10 13:30	Logon successful	2016-11-10 13:30:00	192.168.1.1	1	/	
143	Admin	2016-11-10 13:35	Logon successful	2016-11-10 13:35:00	192.168.1.1	1	/	
144	Admin	2016-11-10 13:40	Logon successful	2016-11-10 13:40:00	192.168.1.1	1	/	
145	Admin	2016-11-10 13:45	Logon successful	2016-11-10 13:45:00	192.168.1.1	1	/	
146	Admin	2016-11-10 13:50	Logon successful	2016-11-10 13:50:00	192.168.1.1	1	/	
147	Admin	2016-11-10 13:55	Logon successful	2016-11-10 13:55:00	192.168.1.1	1	/	
148	Admin	2016-11-10 14:00	Logon successful	2016-11-10 14:00:00	192.168.1.1	1	/	
149	Admin	2016-11-10 14:05	Logon successful	2016-11-10 14:05:00	192.168.1.1	1	/	
150	Admin	2016-11-10 14:10	Logon successful	2016-11-10 14:10:00	192.168.1.1	1	/	
151	Admin	2016-11-10 14:15	Logon successful	2016-11-10 14:15:00	192.168.1.1	1	/	
152	Admin	2016-11-10 14:20	Logon successful	2016-11-10 14:20:00	192.168.1.1	1	/	
153	Admin	2016-11-10 14:25	Logon successful	2016-11-10 14:25:00	192.168.1.1	1	/	
154	Admin	2016-11-10 14:30	Logon successful	2016-11-10 14:30:00	192.168.1.1	1	/	
155	Admin	2016-11-10 14:35	Logon successful	2016-11-10 14:35:00	192.168.1.1	1	/	
156	Admin	2016-11-10 14:40	Logon successful	2016-11-10 14:40:00	192.168.1.1	1	/	
157	Admin	2016-11-10 14:45	Logon successful	2016-11-10 14:45:00	192.168.1.1	1	/	
158	Admin	2016-11-10 14:50	Logon successful	2016-11-10 14:50:00	192.168.1.1	1	/	
159	Admin	2016-11-10 14:55	Logon successful	2016-11-10 14:55:00	192.168.1.1	1	/	
160	Admin	2016-11-10 15:00	Logon successful	2016-11-10 15:00:00	192.168.1.1	1	/	
161	Admin	2016-11-10 15:05	Logon successful	2016-11-10 15:05:00	192.168.1.1	1	/	
162	Admin	2016-11-10 15:10	Logon successful	2016-11-10 15:10:00	192.168.1.1	1	/	
163	Admin	2016-11-10 15:15	Logon successful	2016-11-10 15:15:00	192.168.1.1	1	/	
164	Admin	2016-11-10 15:20	Logon successful	2016-11-10 15:20:00	192.168.1.1	1	/	
165	Admin	2016-11-10 15:25	Logon successful	2016-11-10 15:25:00	192.168.1.1	1	/	
166	Admin	2016-11-10 15:30	Logon successful	2016-11-10 15:30:00	192.168.1.1	1	/	
167	Admin	2016-11-10 15:35	Logon successful	2016-11-10 15:35:00	192.168.1.1	1	/	
168	Admin	2016-11-10 15:40	Logon successful	2016-11-10 15:40:00	192.168.1.1	1	/	
169	Admin	2016-11-10 15:45	Logon successful	2016-11-10 15:45:00	192.168.1.1	1	/	
170	Admin	2016-11-10 15:50	Logon successful	2016-11-10 15:50:00	192.168.1.1	1	/	
171	Admin	2016-11-10 15:55	Logon successful	2016-11-10 15:55:00	192.168.1.1	1	/	
172	Admin	2016-11-10 16:00	Logon successful	2016-11-10 16:00:00	192.168.1.1	1	/	
173	Admin	2016-11-10 16:05	Logon successful	2016-11-10 16:05:00	192.168.1.1	1	/	
174	Admin	2016-11-10 16:10	Logon successful	2016-11-10 16:10:00	192.168.1.1	1	/	
175	Admin	2016-11-10 16:15	Logon successful	2016-11-10 16:15:00	192.168.1.1	1	/	
176	Admin	2016-11-10 16:20	Logon successful	2016-11-10 16:20:00	192.168.1.1	1	/	
177	Admin	2016-11-10 16:25	Logon successful	2016-11-10 16:25:00	192.168.1.1	1	/	
178	Admin	2016-11-10 16:30	Logon successful	2016-11-10 16:30:00	192.168.1.1	1	/	
179	Admin	2016-11-10 16:35	Logon successful	2016-11-10 16:35:00	192.168.1.1	1	/	
180	Admin	2016-11-10 16:40	Logon successful	2016-11-10 16:40:00	192.168.1.1	1	/	
181	Admin	2016-11-10 16:45	Logon successful	2016-11-10 16:45:00	192.168.1.1	1	/	
182	Admin	2016-11-10 16:50	Logon successful	2016-11-10 16:50:00	192.168.1.1	1	/	
183	Admin	2016-11-10 16:55	Logon successful	2016-11-10 16:55:00	192.168.1.1	1	/	
184	Admin	2016-11-10 17:00	Logon successful	2016-11-10 17:00:00	192.168.1.1	1	/	
185	Admin	2016-11-10 17:05	Logon successful	2016-11-10 17:05:00	192.168.1.1	1	/	
186	Admin	2016-11-10 17:10	Logon successful	2016-11-10 17:10:00	192.168.1.1	1	/	
187	Admin	2016-11-10 17:15	Logon successful	2016-11-10 17:15:00	192.168.1.1	1	/	
188	Admin	2016-11-10 17:20	Logon successful	2016-11-10 17:20:00	192.168.1.1	1	/	
189	Admin	2016-11-10 17:25	Logon successful	2016-11-10 17:25:00	192.168.1.1	1	/	
190	Admin	2016-11-10 17:30	Logon successful	2016-11-10 17:30:00	192.168.1.1	1	/	
191	Admin	2016-11-10 17:35	Logon successful	2016-11-10 17:35:00	192.168.1.1	1	/	
192	Admin	2016-11-10 17:40	Logon successful	2016-11-10 17:40:00	192.168.1.1	1	/	
193	Admin	2016-11-10 17:45	Logon successful	2016-11-10 17:45:00	192.168.1.1	1	/	
194	Admin	2016-11-10 17:50	Logon successful	2016-11-10 17:50:00	192.168.1.1	1	/	
195	Admin	2016-11-10 17:55	Logon successful	2016-11-10 17:55:00	192.168.1.1	1	/	
196	Admin	2016-11-10 18:00	Logon successful	2016-11-10 18:00:00	192.168.1.1	1	/	
197	Admin	2016-11-10 18:05	Logon successful	2016-11-10 18:05:00	192.168.1.1	1	/	
198	Admin	2016-11-10 18:10	Logon successful	2016-11-10 18:10:00	192.168.1.1	1	/	
199	Admin	2016-11-10 18:15	Logon successful	2016-11-10 18:15:00	192.168.1.1	1	/	
200	Admin	2016-11-10 18:20	Logon successful	2016-11-10 18:20:00	192.168.1.1	1	/	
201	Admin	2016-11-10 18:25	Logon successful	2016-11-10 18:25:00	192.168.1.1	1	/	
202	Admin	2016-11-10 18:30	Logon successful	2016-11-10 18:30:00	192.168.1.1	1	/	
203	Admin	2016-11-10 18:35	Logon successful	2016-11-10 18:35:00	192.168.1.1	1	/	
204	Admin	2016-11-10 18:40	Logon successful	2016-11-10 18:40:00	192.168.1.1	1	/	
205	Admin	2016-11-10 18:45	Logon successful	2016-11-10 18:45:00	192.168.1.1	1	/	
206	Admin	2016-11-10 18:50	Logon successful	2016-11-10 18:50:00	192.168.1.1	1	/	
207	Admin	2016-11-10 18:55	Logon successful	2016-11-10 18:55:00	192.168.1.1	1	/	
208	Admin	2016-11-10 19:00	Logon successful	2016-11-10 19:00:00	192.168.1.1	1	/	
209	Admin	2016-11-10 19:05	Logon successful	2016-11-10 19:05:00	192.168.1.1	1	/	
210	Admin	2016-11-10 19:10	Logon successful	2016-11-10 19:10:00	192.168.1.1	1	/	
211	Admin	2016-11-10 19:15	Logon successful	2016-11-10 19:15:00	192.168.1.1	1	/	
212	Admin	2016-11-10 19:20	Logon successful	2016-11-10 19:20:00	192.168.1.1	1	/	
213	Admin	2016-11-10 19:25	Logon successful	2016-11-10 19:25:00	192.168.1.1	1	/	
214	Admin	2016-11-10 19:30	Logon successful	2016-11-10 19:30:00	192.168.1.1	1	/	
215	Admin	2016-11-10 19:35	Logon successful	2016-11-10 19:35:00	192.168.1.1	1	/	
216	Admin	2016-11-10 19:40	Logon successful	2016-11-10 19:40:00	192.168.1.1	1	/	
217	Admin	2016-11-10 19:45	Logon successful	2016-11-10 19:45:00	192.168.1.1	1	/	
218	Admin	2016-11-10 19:50	Logon successful	2016-11-10 19:50:00	192.168.1.1	1	/	
219	Admin	2016-11-10 19:55	Logon successful	2016-11-10 19:55:00	192.168.1.1	1	/	
220	Admin	2016-11-10 20:00						